

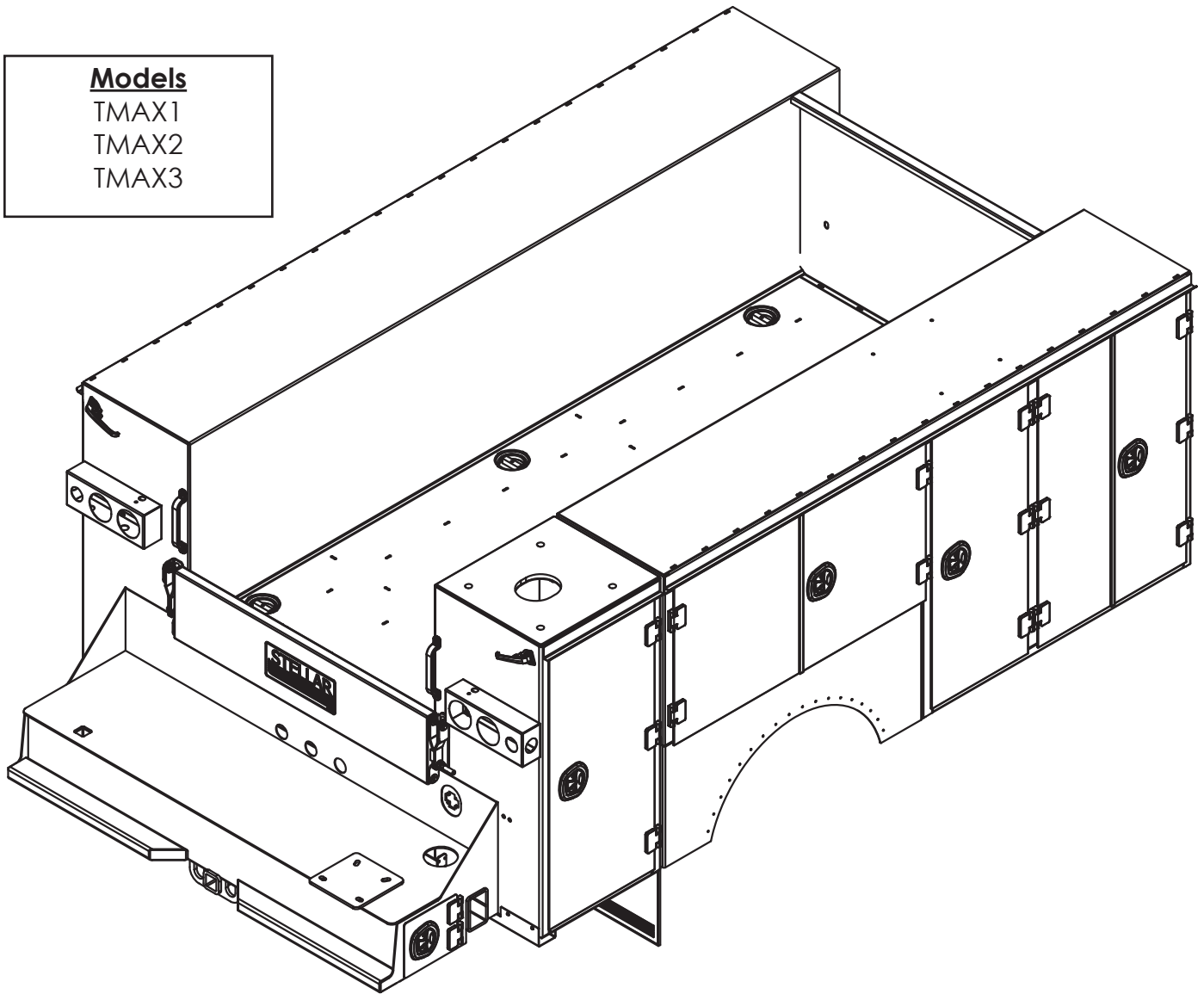


TMAX Series Service Body Owner's Manual

Operation • Maintenance • Installation • Parts

Models

TMAX1
TMAX2
TMAX3



Stellar Industries, Inc.

190 State Street

PO Box 169

Garner, IA 50438

800-321-3741

Fax: 641-923-2811

www.stellarindustries.com

Subject to Change without Notification.
© 2015 Stellar Industries, Inc.

Last Revision: 04/04/16

TMAX Manual Revisions

Date of Revision	Section Revised	Description of Revision

Table of Contents

Introduction	iv
TMAX Service Body Terminology	v
TMAX Service Body Specifications	vi
Chapter 1 - Operation	1
Masterlock Operation	1
Air Drain Operation.....	1
Stabilizer Operation	1
Tailgate Operation	2
Door Latch Operation.....	2
Sliding Top Operation	2
Crane Drain Pan Operation	2
Chapter 2 - Maintenance.....	3
A note about washing the TMAX body:	4
Torque Data Chart	4
Replacement Parts.....	5
Chapter 3 - Installation	7
TMAX Installation Notes.....	7
TMAX1 Mounting Kit - Ford Chassis - PN 13258	7
TMAX2 Mounting Kit - PN 52043.....	9
TMAX3 Mounting Kit - Single Axle - PN 27936.....	10
TMAX3 Mounting Kit - Tandem Axle - PN 31143.....	11
TMAX3 Mounting Kit - Tandem Axle - PN 31143.....	12
Dual Stabilizer Power Out/Power Down	12
Welder Installation	16
Electrical Circuit Grounding	16
Chapter 4 - Assembly Drawings	17
Tailgate Assembly - PN 21401	17
Light Box/Reflector Assembly	18
Grab Handle Assembly - PN 54547	19
Mud Flap Assembly - PN 19494	20
Harness Guard Kit Assembly - PN 54549	21
Ford Fuel Fill Assembly (TMAX1) - PN 54715.....	22
License Plate Hardware Assembly - PN 54548.....	23

Introduction

A copy of this manual is provided with every body and can be found in the hard plastic manual case that is installed on the chassis. A copy of this manual shall remain with the body at all times.

Throughout the manual, three signal words will be used to bring attention to important items:

NOTICE

A NOTICE signal word indicates a practice not related to physical injury.

⚠ WARNING

A WARNING signal word indicates a hazardous situation which, if not avoided, could result in death or serious injury.

⚠ DANGER

A DANGER signal word indicates a hazardous situation which, if not avoided, will result in death or serious injury.

This manual is not binding. Stellar Industries, Inc. reserves the right to change, at any time, any or all of the items, components, and parts deemed necessary for product improvement or commercial/production purposes. This right is kept with no requirement or obligation for immediate mandatory updating of this manual.

In closing:

If more information is required or technical assistance is needed, or if you feel that any part of this manual is unclear or incorrect, please contact the Stellar Customer Service Department by phone at 800-321-3741 or email at service@stellarindustries.com.

**For Technical Questions, Information, Parts, or Warranty, Call Toll-Free at
800-321-3741**

Hours: Monday - Friday, 8:00 a.m. - 5:00 p.m. CST

Or email at the following addresses:

Technical Questions, and Information

service@stellarindustries.com

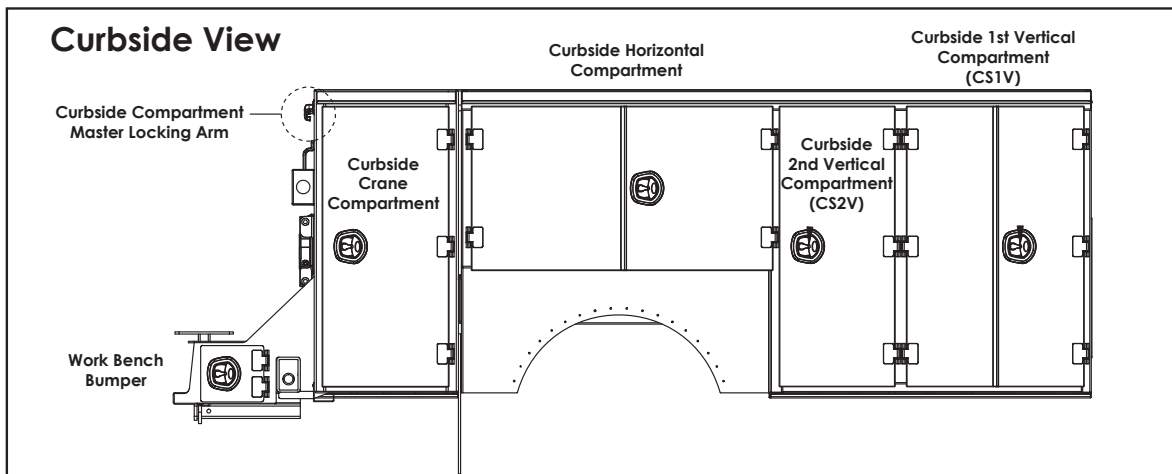
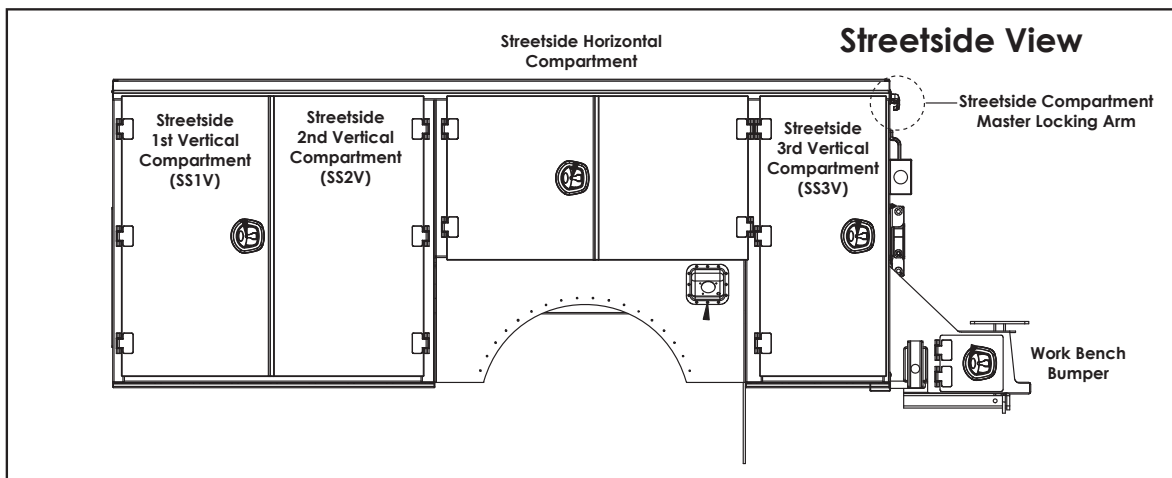
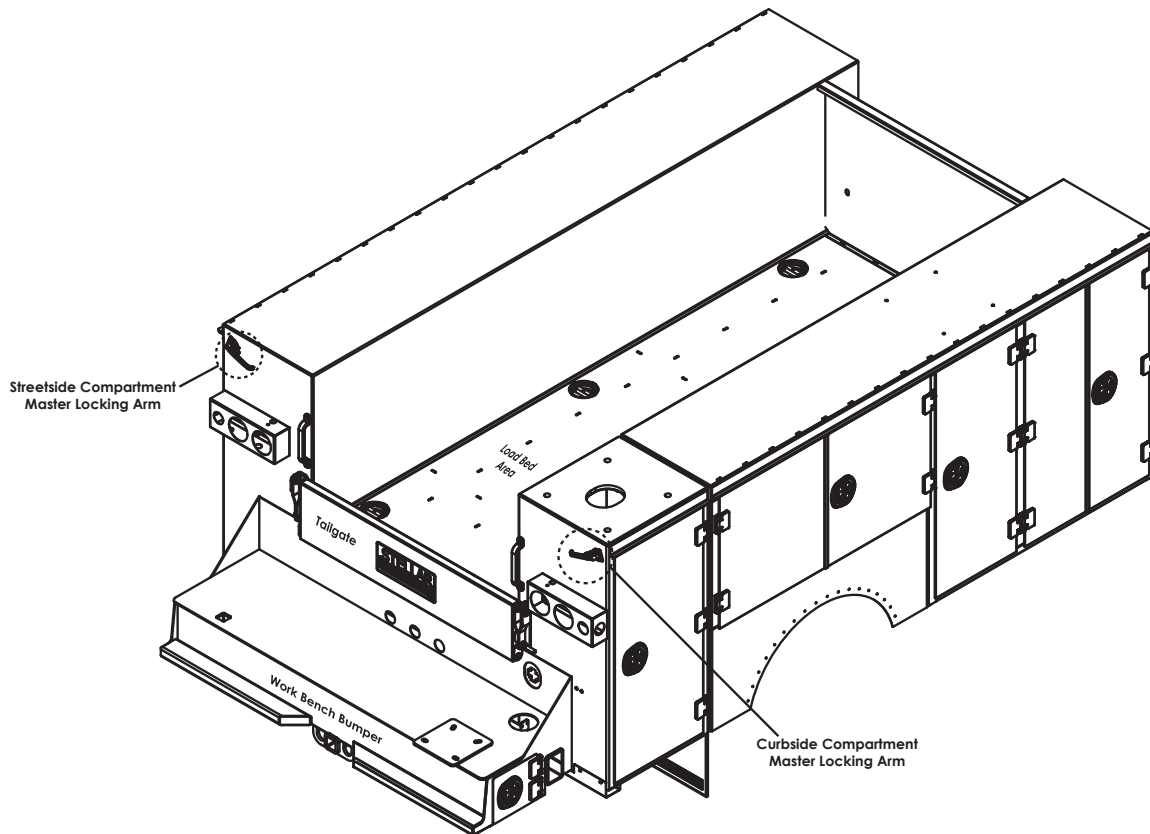
Order Parts

parts@stellarindustries.com

Warranty Information

warranty@stellarindustries.com

TMAX Service Body Terminology



TMAX Service Body Specifications

TMAX1-9	
Applicable Chassis	16,000 – 19,500 GVWR
Cab to Axle	84" (213.36 cm)
Body Length	109" (276.86 cm)
Body Height	44" (111.76 cm)
Body Width	94" (238.76 cm)
Compartment Depth	22" (55.88 cm)
Floor Width	50" (127 cm)
Net Weight	3,370 lbs (1528.61 kg)
Crane Models	3315, 4421, 5521, 7621, 7630
TMAX1-11	
Applicable Chassis	16,000 – 19,500 GVWR
Cab to Axle	84" (213.36 cm)
Body Length	133" (337.82 cm)
Body Height	44" (111.76 cm)
Body Width	94" (238.76 cm)
Compartment Depth	22" (55.88 cm)
Floor Width	50" (127 cm)
Net Weight	3,830 lbs (1737.26 kg)
Crane Models	3315, 4421, 5521, 7621, 7630
TMAX2-11	
Applicable Chassis	Above 19,500 GVWR
Cab to Axle	84" (213.36 cm)
Body Length	133" (337.82 cm)
Body Height	52" (132.08 cm)
Body Width	94" (238.76 cm)
Compartment Depth	22" (55.88 cm)
Floor Width	50" (127 cm)
Net Weight	4,560 lbs (2068.38 kg)
Crane Models	7621, 7630, 9621, 9630, 10621, 10630, 12621, 12630

TMAX2-14	
Applicable Chassis	Above 19,500 GVWR
Cab to Axle	84" (213.36 cm)
Body Length	168" (426.72 cm)
Body Height	52" (132.08 cm)
Body Width	94" (238.76 cm)
Compartment Depth	22" (55.88 cm)
Floor Width	50" (127 cm)
Net Weight	5,090 lbs (2308.79 kg)
Crane Models	7621, 7630, 9621, 9630, 10621, 10630, 12621, 12630
TMAX3	
Applicable Chassis	33,000 GVWR and up
Cab to Axle	120" (304.8 cm)
Cab to Trunnion	147" (373.38 cm)
Body Length	169" (429.26 cm)
Body Height	52"/60" (132.1/152.4 cm)
Body Width	96" (243.84 cm)
Compartment Depth	22" (55.88 cm)
Floor Width	50"/52" (127/132.1 cm)
Net Weight	6,900 lbs (3129.79 kg)
Crane Models	14530
TMAX3T	
Applicable Chassis	46,000 GVWR and up
Cab to Axle	120" (304.8 cm)
Cab to Trunnion	147" (373.38 cm)
Body Length	210" (533.40 cm)
Body Height	52"/60" (132.1/152.4 cm)
Body Width	96" (243.84 cm)
Compartment Depth	22" (55.88 cm)
Floor Width	50"/52" (127/132.1 cm)
Net Weight	7,560 lbs (3429.16 kg)
Crane Models	14530

Chapter 1 - Operation

This chapter contains information regarding the operation of Stellar manufactured service bodies. Please study the following pages to ensure your familiarity with the operation process. This understanding is vital to the safe and efficient operation of the service body.

Masterlock Operation

Step 1: Close all doors.

Step 2: Rotate the handle into the locked position, aligning the holes.

Step 3: Insert the locking device into the aligned holes.

Note: Perform these steps for each applicable side pack.

Air Drain Operation

Depending on where and how the air drain valve is mounted to the body determines the operation. Follow the decal instructions for correct positioning of the valve handle.

⚠ WARNING Always drain air tank/receiver before leaving a job or work site. Air tank should not have compressed air while driving the service truck.

Stabilizer Operation

Before operating the stabilizers, make sure that the service truck is parked on an even surface and be aware of the surface the truck has been positioned upon. The area should be a firm supporting surface.

⚠ WARNING Keep clear of stabilizer legs during operation. Moving stabilizers can cause serious crushing injuries. Make certain that all personnel are clear of the stabilizer and the ground contact point before operating.

⚠ WARNING Do not raise the rear tires of the truck off the ground with the stabilizers. Confirm that the stabilizers are positioned on stable, flat ground and that the truck is as level as possible both front to rear and side to side. Use stabilizer pads to ensure the proper distribution of weight.

Step 1: Fully extend the stabilizer beam. Note: Manual beams will have to be pulled out. If equipped with a power out option, push downward on the valve bank lever labeled 'CS Extend' or 'SS Extend' until the beam stops moving outward.

Step 2: Lower the curbside stabilizer leg by pushing down on the valve bank lever labeled 'CS Down.' Lower the stabilizer until it makes good contact with the firm supporting surface. If equipped with manual crankdown legs, manually lower the legs until they make good contact with the supporting surface. Avoid over-extending the stabilizer leg. The truck tires should remain in contact with the ground surface.

Step 3: Lower the streetside stabilizer leg by pushing downward on the valve bank control lever labeled 'SS Down.' Lower the stabilizer until it makes good contact with the firm supporting surface. If equipped with manual crankdown legs, manually lower the legs until they make good contact with the supporting surface. Avoid over-extending the stabilizer leg. The truck tires should remain in contact with the ground surface.

Tailgate Operation

Lowering the tailgate

Step 1: Pull upward on the red post/bar attached to the right side linkage of the tailgate.

Step 2: Now pull downward on the tailgate.

Closing/Stowing the tailgate

Step 1: Pull upward on the red post/bar attached to the right side linkage.

Step 2: Push the tailgate upward until it stops.

Step 3: Pull downward on the red post/bar to lock the tailgate in place.

Door Latch Operation

Step 1: To open, pull the T-Handle portion of the latch outward.

Step 2: Turn T-Handle as follows:

Curbside Door Latches: Turn handle clockwise to open the door.

Streetside Door Latches: Turn handle counter-clockwise to open the door.

Sliding Top Operation

Opening the Sliding Top

Step 1: Pull the latch assembly T-Handle outward.

Step 2: Turn the T-Handle counter-clockwise to unlatch the door rods from the rod guides.

Step 3: Pull the door assembly upward and over until the door holders snap into the holder sockets.

Step 4: Using both hands, apply even pressure and push the rear sliding top assembly forward until it stops.

Closing the Sliding Top

Step 1: Using both hands, pull the rear sliding top section toward the rear of the body until it stops.

Step 2: With the tailgate assembly in the stowed and locked position, pull up and then downward on the door assembly.

Step 3: Turn the T-Handle clockwise until the door rods slide into the rod guides.

Step 4: Push the T-Handle back into the latch assembly pocket.

Crane Drain Pan Operation

Removing the Drain Pan

Step 1: Pull the quick release pin located on the right side of the drain pan.

Step 2: Slide the drain pan to the right (Toward the right side wall of the crane compartment).

Step 3: Lower the drain pan and clean as needed. Remove debris and clean the drain tube.

Re-Installing the Drain Pan

Step 1: Lift the drain pan, staying toward the right side of the crane compartment.

Step 2: Re-align the tab brackets to the drain pan slots.

Step 3: Slide the drain pan pin to the left (Toward the rear of the body).

Step 4: Re-install the quick release pin.

Chapter 2 - Maintenance

Maintenance Item	Action	Note	Interval
Door Latch Assembly	Inspect and Lubricate	Lubricate with EP2 grease or light-weight lithium spray grease.	Monthly
Door Rod Guides	Inspect and Lubricate	Lubricate with EP2 grease or light-weight lithium spray grease.	Monthly
Door Spring Rod	Inspect and Lubricate	Lubricate with EP2 grease or light-weight lithium spray grease.	Monthly
Masterlock Rod Guides	Inspect and Lubricate	Lubricate with EP2 grease or light-weight lithium spray grease.	Monthly
Door Hinge	Inspect and Lubricate	Lubricate with EP2 grease or light-weight lithium spray grease.	Quarterly
Tailgate	Inspect and Lubricate	Lubricate hinges with light-lithium grease or aerosol spray.	Quarterly
Body Mounting Hardware	Inspect and Torque	Inspect the mounting brackets for damage or cracks. Check all mounting cap screws for proper torque.	Quarterly
Compartment Drain Plugs	Inspect and Replace	Check the security of the compartment drain plugs. Replace if they are cracked or loose.	Monthly
Body Washing	Wash the Body	Wash the body to prevent damage from any type of corrosive substances collected from roads or job sites.	Weekly
Weatherstripping	Inspect and Replace	Check door and compartment weatherstrip seal for rips or tears. Replace as needed.	Quarterly
Decals	Inspect and Replace	Inspect all decals attached to the body to ensure that they are all still legible. Replace as needed.	Monthly
Body Mounted Lights	Inspect and Replace	Inspect all body lights for damage and replace as needed: Marker Lights, Clearance Lights, Turn/Stop/Tail Lights, Back-up Lights, Compartment Lights, Flood Lights.	Daily

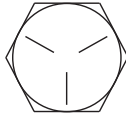
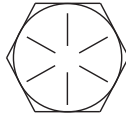
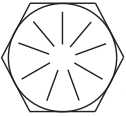
A note about washing the TMAX body:

The body should be washed at least once per week to prevent damage to the paint, wiring or rubber material from any type of corrosive substances collected from roads or job sites. When washing the body, avoid direct water spray toward electrical components such as floodlights, radio remote receivers, the VEC center, and areas of the body which may have rock chips.

Torque Data Chart

When using the torque data in the chart, the following rules should be observed:

- Bolt manufacturer's particular specifications should be consulted when provided.
- Flat washers of equal strength must be used.
- All torque measurements are given in foot-pounds. To convert to inch-pounds, multiply by 12.
- Torque values specified are for bolts with residual oils or no special lubricants applied.
- Torque values for socket-head capscrews are the same as for Grade 8 capscrews.

		GRADE 5		GRADE 8		GRADE 9
						
Size (DIA-TPI)	Bolt DIA (Inches)	Plain (Ft-Lb)	Plated (Ft-Lb)	Plain (Ft-Lb)	Plated (Ft-Lb)	Plated (Ft-Lb)
5/16-18	0.3125	17	13	25	18	22
3/8-16	0.3750	31	23	44	33	39
7/16-14	0.4375	49	37	70	52	63
1/2-13	0.5000	75	57	105	80	96
9/16-12	0.5625	110	82	155	115	139
5/8-11	0.6250	150	115	220	160	192
3/4-10	0.7500	265	200	375	280	340
7/8-9	0.8750	395	295	605	455	549
1-8	1.000	590	445	910	680	823
1 1/8-7	1.1250	795	595	1290	965	1167
1 1/4-7	1.2500	1120	840	1815	1360	1646
1 3/8-6	1.3750	1470	1100	2380	1780	2158
1 1/2-6	1.500	1950	1460	3160	2370	2865

NOTICE

- Do not use these values if a different torque value or tightening procedure is given for a specific application. Torque values listed are for general use only. Check tightness of fasteners periodically.
- Shear bolts are designed to fail under predetermined loads. Always replace shear bolts with identical grade.
- Fasteners should be replaced with the same or higher grade. If higher grade fasteners are used, these should only be tightened to the strength of the original.
- Tighten plastic insert or crimped steel-type lock nuts to approximately 110 percent of the dry torque values shown in the chart below, applied to the nut, not to the bolt head. Tighten toothed or serrated-type lock nuts to the full torque value. *Note: "Lubricated" means coated with a lubricant such as engine oil, or fasteners with phosphate and oil coatings. "Dry" means plain or zinc plated without lubrication. Tighten lubricated bolts to approximately 80% of dry bolts.*

Replacement Parts

PN	Description
71479	Door Latch
71480	Door Latch
29446	Key Lock Cylinder & Key
71476	Hinge
19321	Door Bumper (clear w/adhesive)
D0202	Fender Rubber
14000	Push-in Fastener (Fender Rubber)
16909PC	Vise Mount Bracket
9263	Quick Release Pin (Vise mount bracket)
63894	Weatherstrip
63895	Weatherstrip
17162	Weatherstrip
17352	Plastic Plug (Compartments)
C4702	Non-Slip Surfacing (4" wide strip)
C5992	Rubberized Rock Chip Guard
C4821	Mud Flap (Stellar) 24" X 24"
54547	Grab Handle Assembly
37422	Solid State Solenoid
33552	Electrical Center Primary (VEC)
C6072	Relay
20100	Light Box (Right hand mount)
20101	Light Box (Left hand mount)
13143	Light (stop/turn/tail) 4.00" round LED
13144	Light (amber clearance) 2.00" round LED
13145	Light (red) 2.00" round LED
27626	Light (backup) 4.00 round LED
2320	Light (license plate)
10334	Grommet (4.00" light)
C4862	Grommet (2.00" light)
0540	Reflector 3.00" amber
0541	Reflector 3.00" red
51263	Floodlight (optional)
14002	Compartment Light (optional)

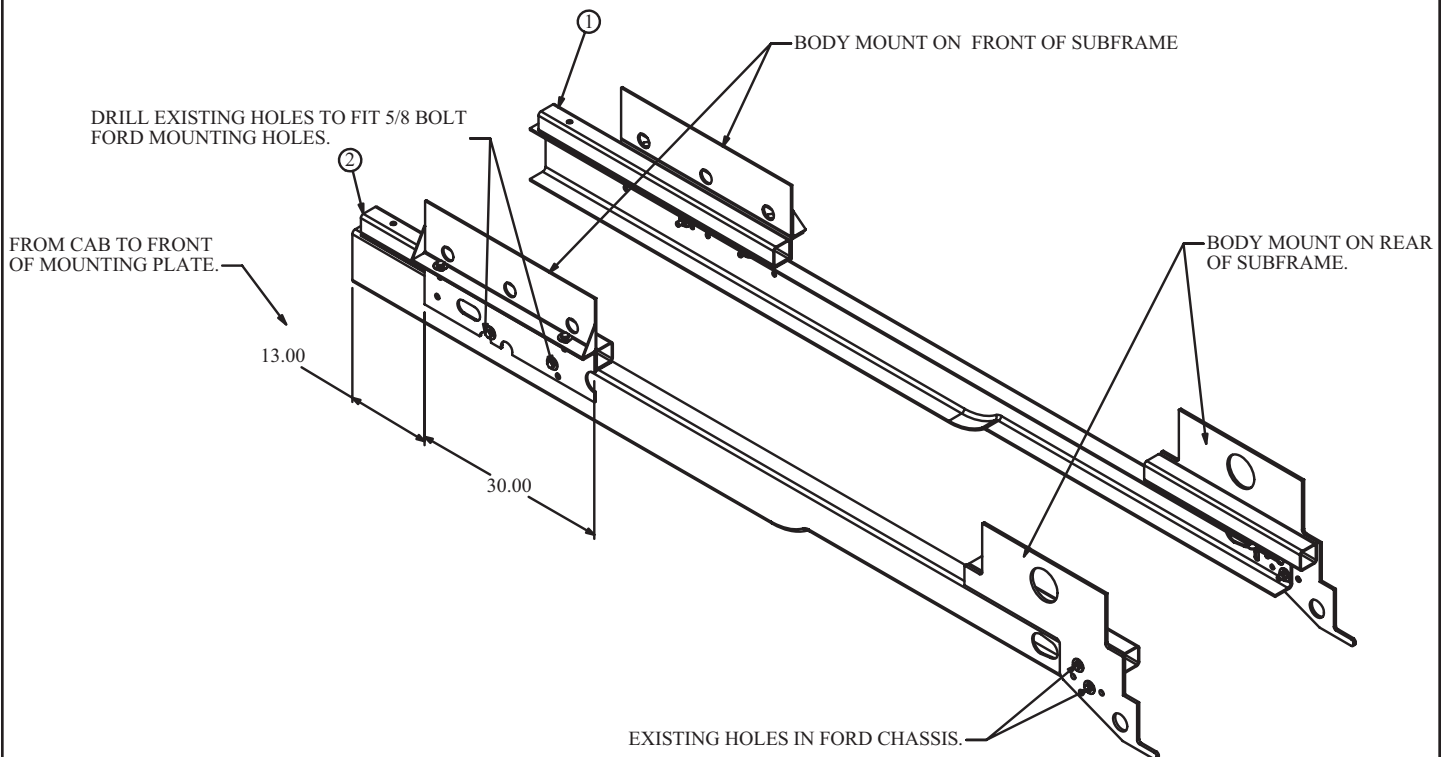
This page intentionally left blank.

Chapter 3 - Installation

TMAX Installation Notes

- Before performing any tasks that involve welding to the chassis, refer to the specific chassis manufacturer's recommendations.
- When lifting and placing the body, use the D-Ring tiedown locations and **always lift vertically.**

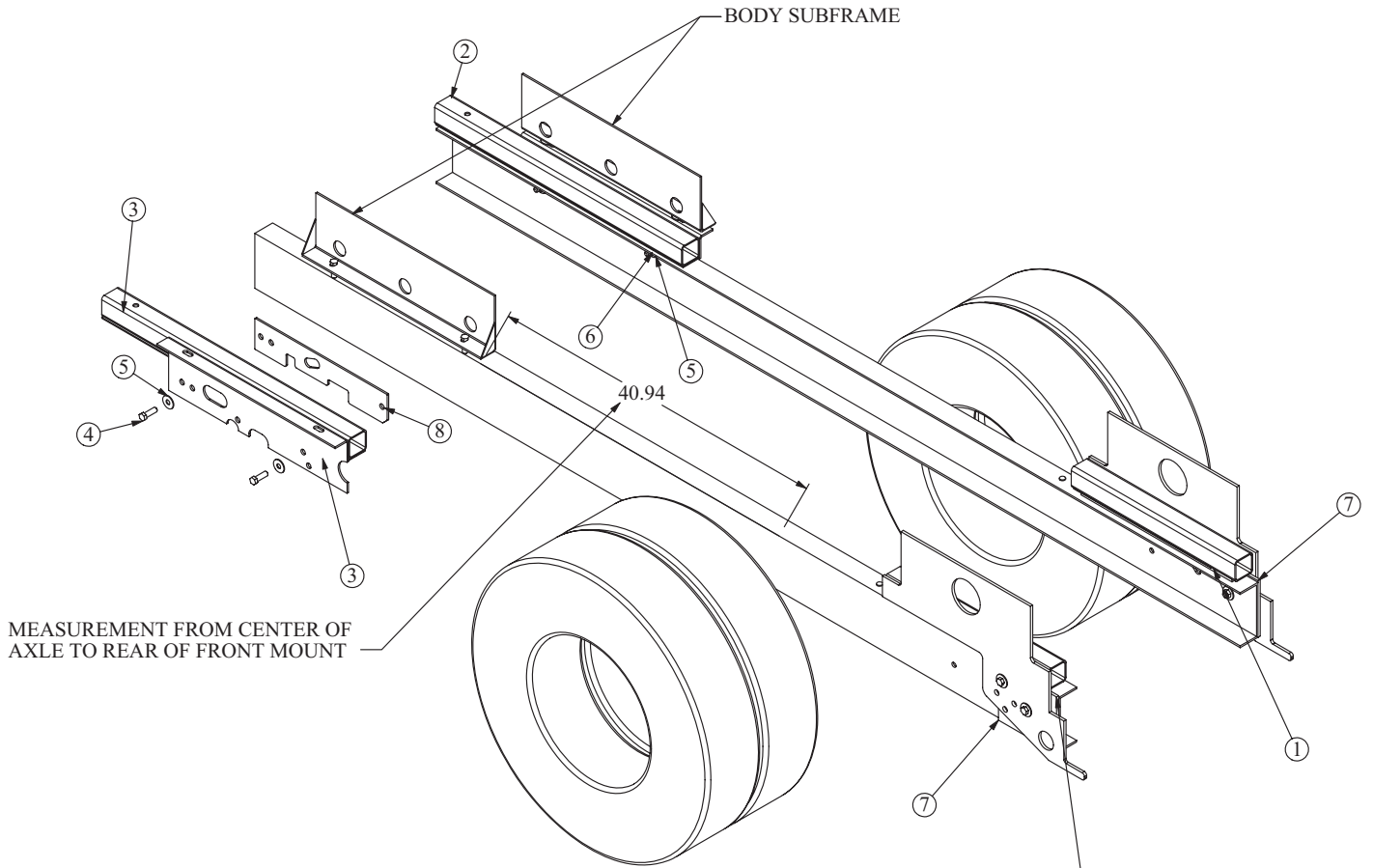
TMAX1 Mounting Kit - Ford Chassis - PN 13258



PN 13258

ITEM	PART	DESCRIPTION
1	13251PC	BRKT BODY MOUNT FRONT RF
2	13254PC	BRKT BODY MOUNT FRONT LF
3	C1025	CAP SCR 0.63-11X2.00 HHGR8 ZY
4	C1038	WASHER 0.63 FLAT
5	24868	NUT 0.63-11 HHGR8 NYLOCK ZY
6	13113	SUBFRAME WLDMT 6620 CRANE BODY

TMAX1 Mounting Kit - Dodge Chassis - PN 57645



NOTE: AFTER LOCATING THE PART, IT CAN BE TACK WELDED IN PLACE FOR EASE OF INSTALLATION

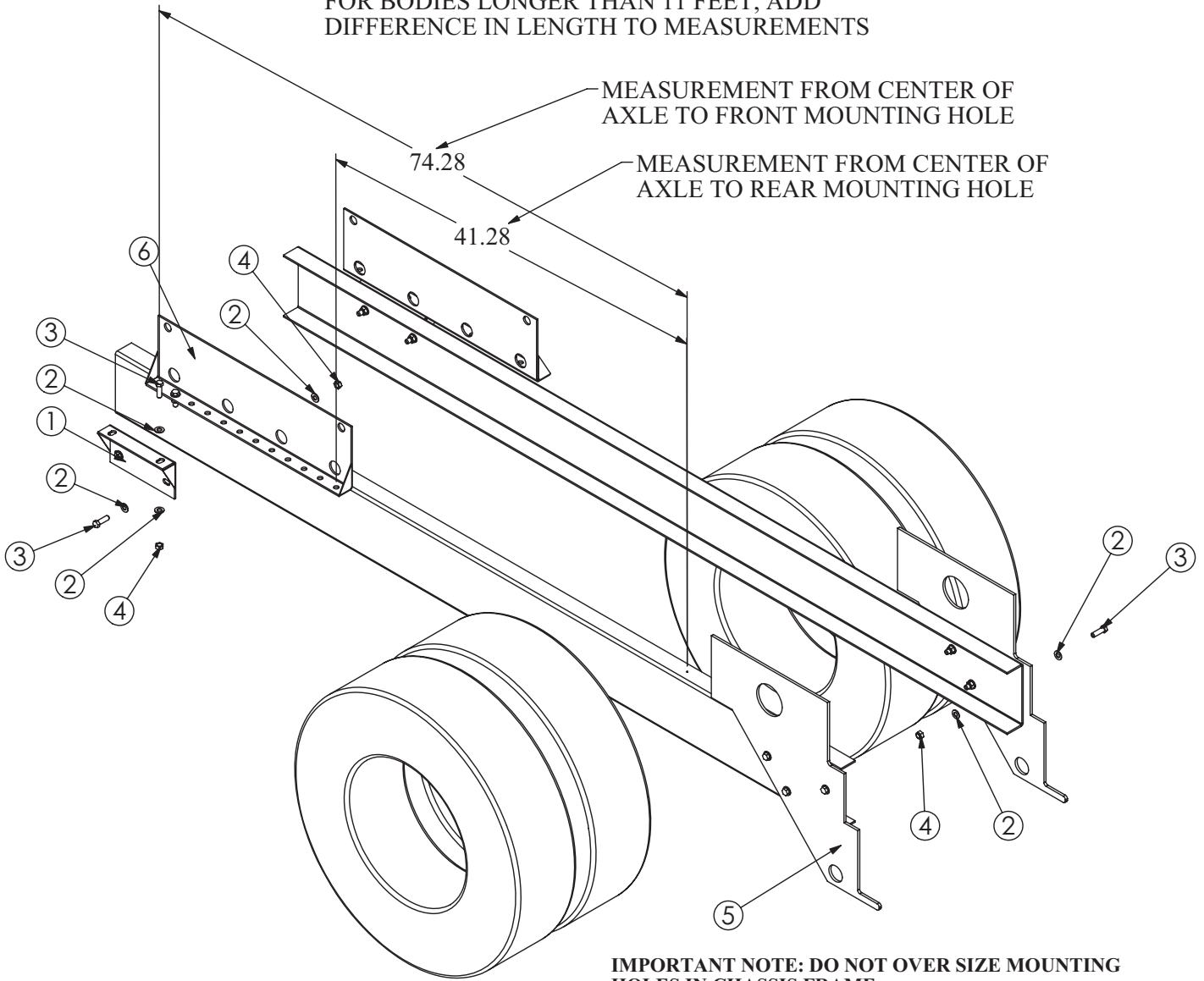
PN 57645

ITEM	PART	DESCRIPTION
1	13253	SPACER REAR .38X3.00X25.00 GM
2	13251PC	BRKT BODY MOUNT FRONT RF
3	13254PC	BRKT BODY MOUNT FRONT LF
4	C1025	CAP SCR 0.63-11X2.00 HHGR8 ZY
5	C1038	WASHER 0.63 FLAT
6	2826	NUT 0.63-11 HH NYLOC
7	24176	SPACER T1 / 5500
8	57646	SPACER FRONT D5500 2010

NOTE: FRAME AND SUBFRAME WELDMENT ARE SHOWN FOR REFERENCE ONLY.

TMAX2 Mounting Kit - PN 52043

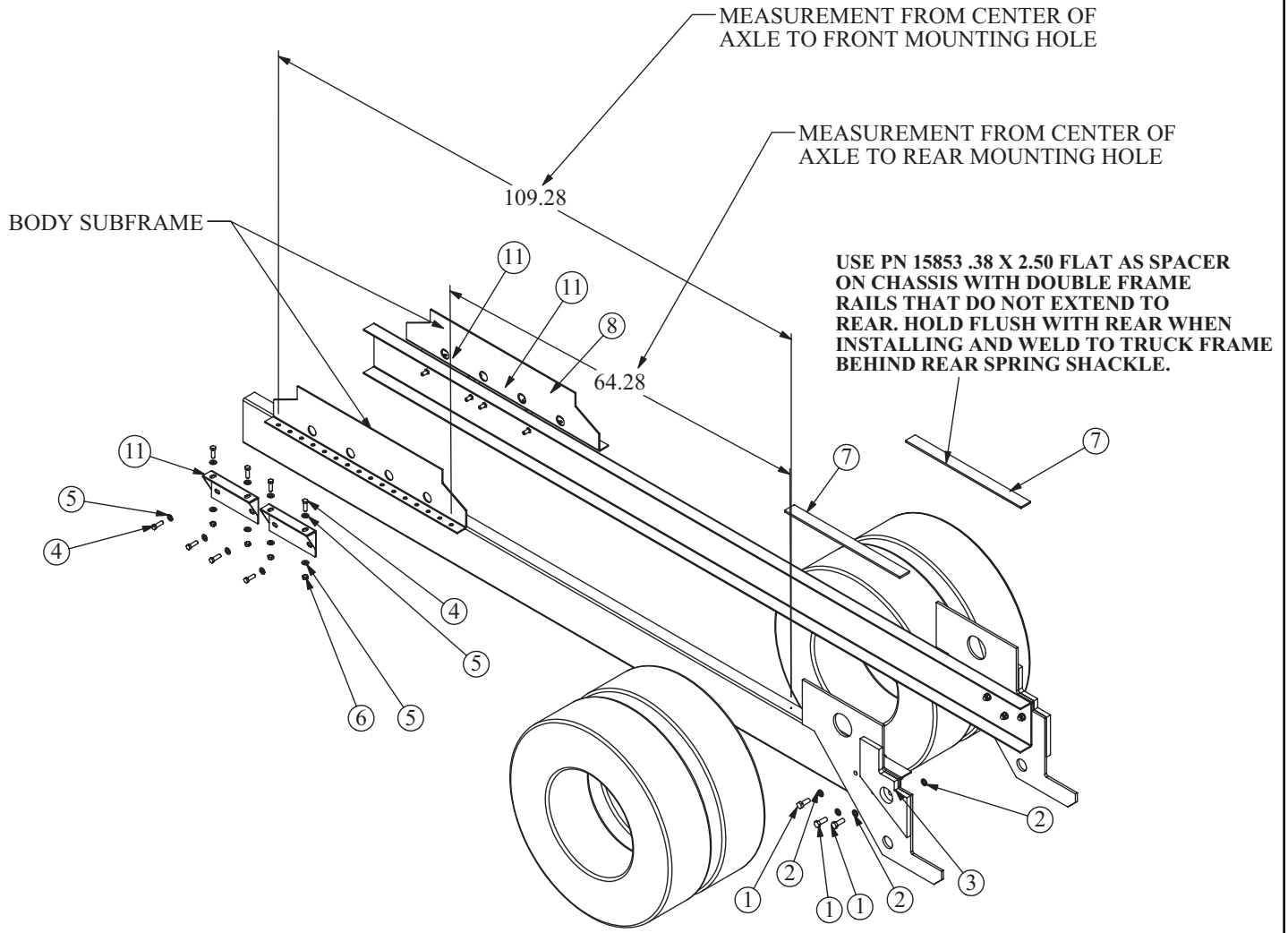
NOTE:
FOR BODIES LONGER THAN 11 FEET, ADD
DIFFERENCE IN LENGTH TO MEASUREMENTS



PN 52043

ITEM	PART	DESCRIPTION	QTY.
1	13951PC	BRKT BOTTOM BODY MNT POWDERCOAT BLK	2
2	C5902	WASHER 0.63 SAE FLAT YELLOW GR8	28
3	C1025	CAP SCR 0.63-11X2.00 HHGR8 ZY	14
4	24868	NUT 0.63-11 HHGR8 NYLOCK ZY	14
5	43617	PLATE SHEAR MECH TMAX2-14	2
6	13673	BRACKET BODY MOUNT 9620 BODY	2

TMAX3 Mounting Kit - Single Axle - PN 27936

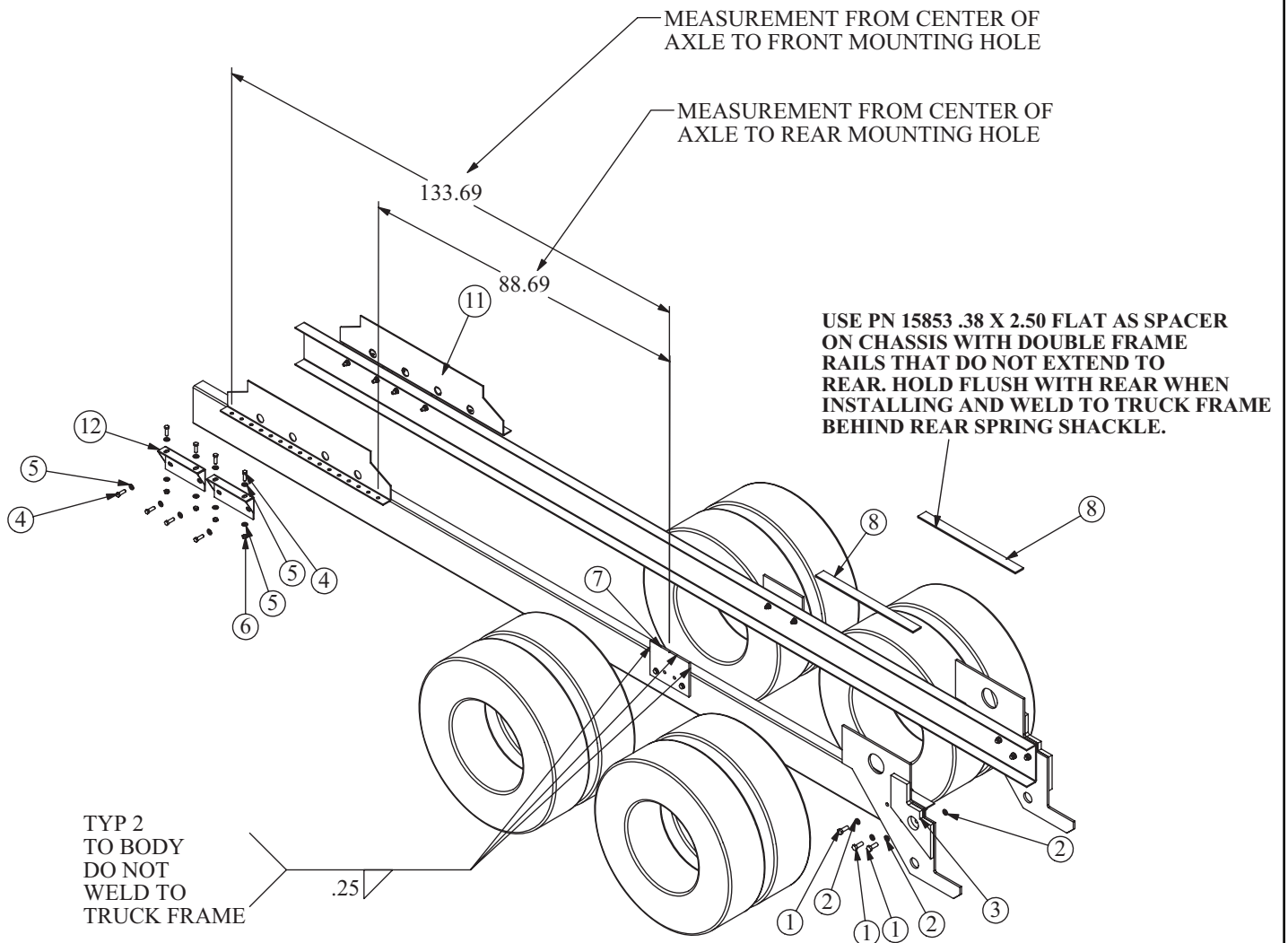


IMPORTANT NOTE: DO NOT OVER SIZE MOUNTING HOLES IN CHASSIS FRAME.

PN 27936

ITEM	PART	DESCRIPTION	QTY.
1	4543	CAP SCR 0.75-10X2.00 HHGR8 ZY	6
2	C6219	WASHER 0.75 SAE FLAT YELLOW GR8	12
3	C0538	NUT 0.75-10 HHGR8 NYLOC	6
4	C1025	CAP SCR 0.63-11X2.00 HHGR8 ZY	16
5	C5902	WASHER 0.63 SAE FLAT YELLOW GR8	32
6	2826	NUT 0.63-11 HH NYLOC	16
7	15853	FLAT .38X2.50X30.00	2
8	24639	BRACKET BODY MOUNT T3 BODY	2
9	24577	PLATE SHEAR T3 BODY	2
10	27281	PLATE REINF SHEAR T3 BODY	2
11	13951PC	BRKT WLDMT BOTTOM BODY MNT T2	4

TMAX3 Mounting Kit - Tandem Axle - PN 31143



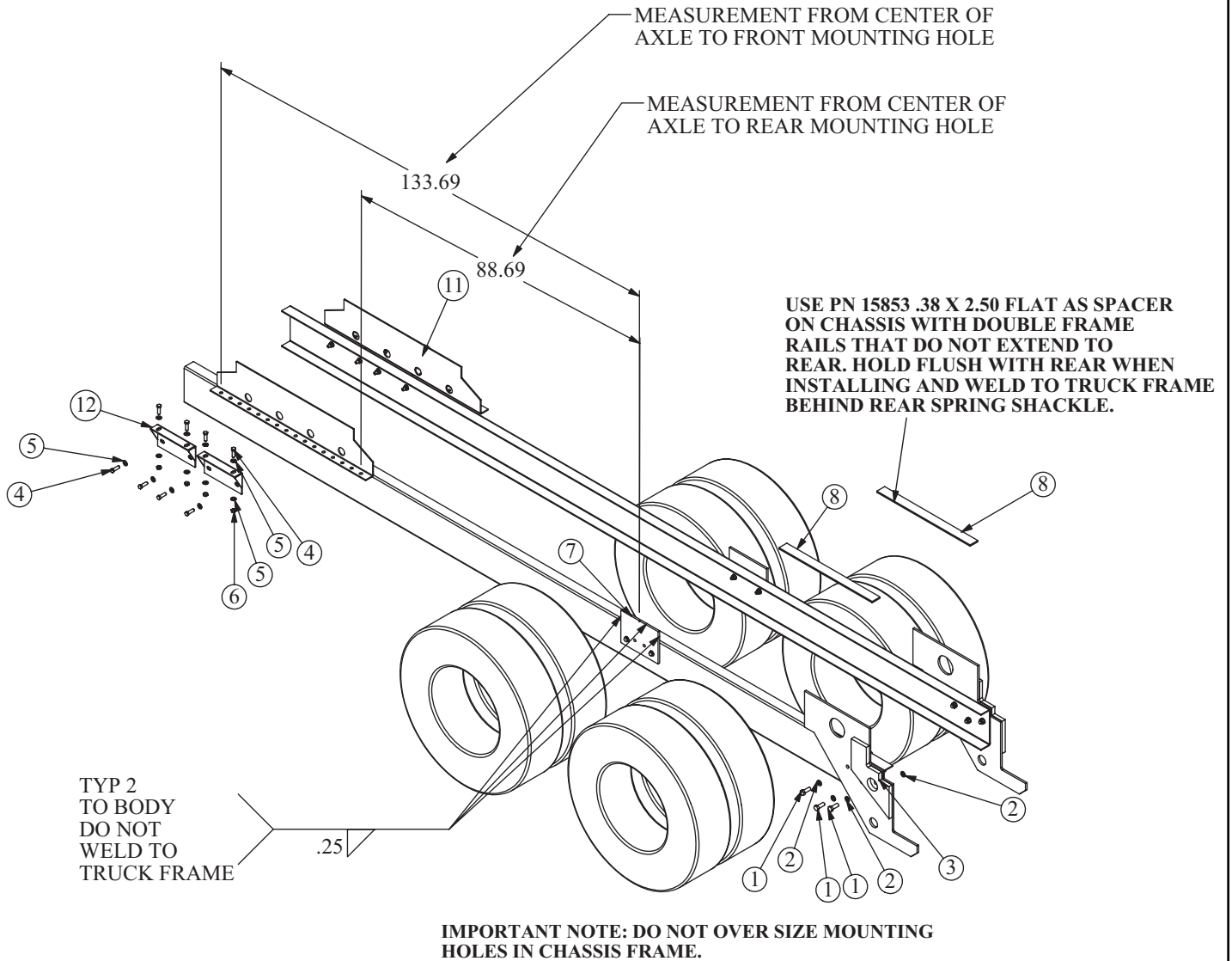
IMPORTANT NOTE: DO NOT OVER SIZE MOUNTING HOLES IN CHASSIS FRAME.

PN 31143

ITEM	PART	DESCRIPTION	QTY.
1	4543	CAP SCR 0.75-10X2.00 HHGR8 ZY	6
2	C6219	WASHER 0.75 SAE FLAT YELLOW GR8	12
3	C0538	NUT 0.75-10 HHGR8 NYLOC	6
4	C1025	CAP SCR 0.63-11X2.00 HHGR8 ZY	20
5	C5902	WASHER 0.63 SAE FLAT YELLOW GR8	40
6	2826	NUT 0.63-11 HH NYLOC	20
7	9904	SHEAR PLATE 0.50X9.00X12.00	2
8	15853	FLAT .38X2.50X30.00	2
9	24577	PLATE SHEAR T3 BODY	2
10	27281	PLATE REINF SHEAR T3 BODY	2
11	24639	BRACKET BODY MOUNT T3 BODY	2
12	13951PC	BRKT WLDMT BOTTOM BODY MNT T2	4

TMAX3 Mounting Kit - Tandem Axle - PN 31143

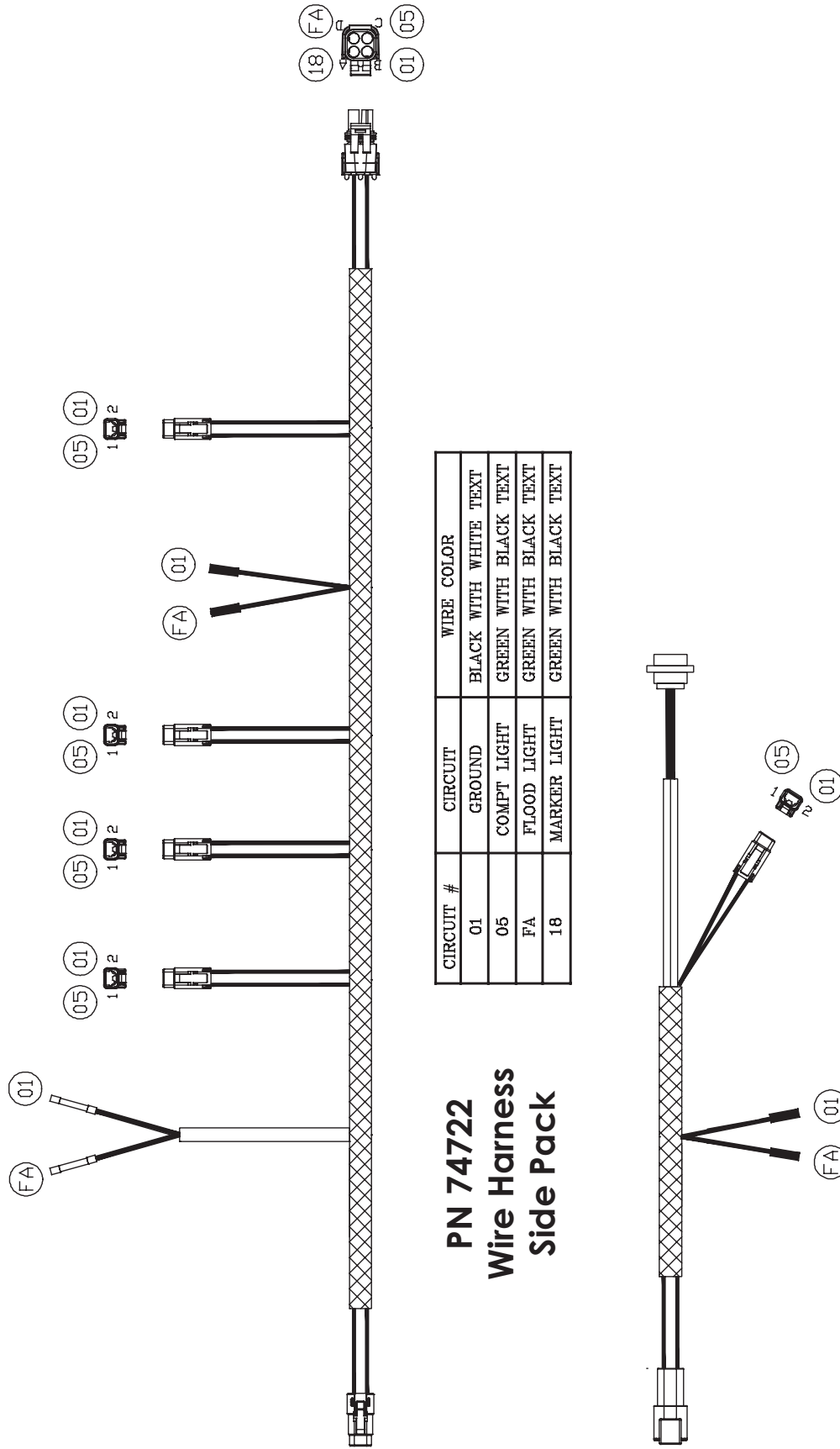
Dual Stabilizer Power Out/Power Down



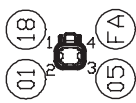
PN 31143

ITEM	PART	DESCRIPTION	QTY.
1	4543	CAP SCR 0.75-10X2.00 HHGR8 ZY	6
2	C6219	WASHER 0.75 SAE FLAT YELLOW GR8	12
3	C0538	NUT 0.75-10 HHGR8 NYLOC	6
4	C1025	CAP SCR 0.63-11X2.00 HHGR8 ZY	20
5	C5902	WASHER 0.63 SAE FLAT YELLOW GR8	40
6	2826	NUT 0.63-11 HH NYLOC	20
7	9904	SHEAR PLATE 0.50X9.00X12.00	2
8	15853	FLAT .38X2.50X30.00	2
9	24577	PLATE SHEAR T3 BODY	2
10	27281	PLATE REINF SHEAR T3 BODY	2
11	24639	BRACKET BODY MOUNT T3 BODY	2
12	13951PC	BRKT WLDMT BOTTOM BODY MNT T2	4

Wiring Harness: Side Pack (Both Sides) - PN 74722

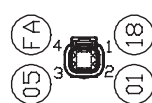


MAIN SECTION



**PN 74722
Wire Harness
Side Pack**

CIRCUIT #	CIRCUIT	WIRE COLOR
01	GROUND	BLACK WITH WHITE TEXT
05	COMPT LIGHT	GREEN WITH BLACK TEXT
FA	FLOOD LIGHT	GREEN WITH BLACK TEXT
18	MARKER LIGHT	GREEN WITH BLACK TEXT

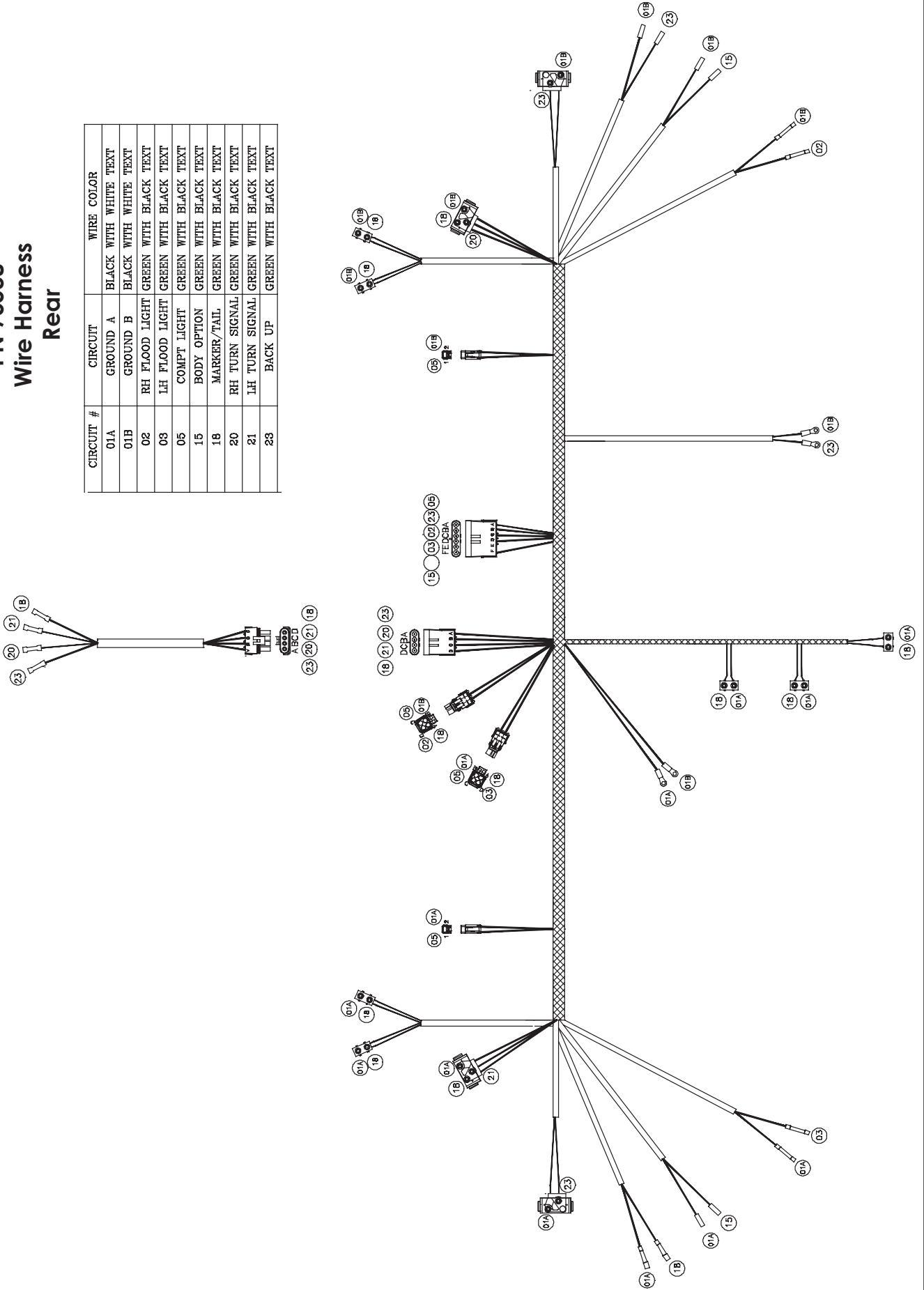


EXT SECTION

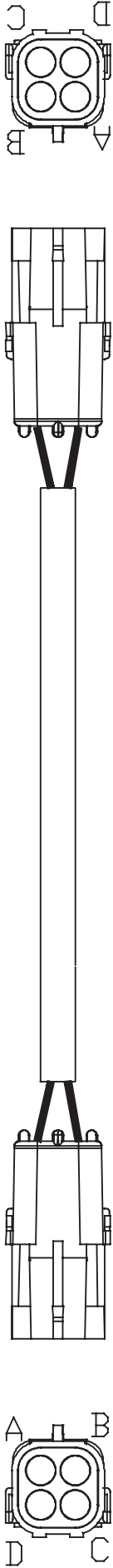
Wiring Harness: Rear - PN 75538

PN 75538 Wire Harness Rear

CIRCUIT #	CIRCUIT	WIRE COLOR
01A	GROUND A	BLACK WITH WHITE TEXT
01B	GROUND B	BLACK WITH WHITE TEXT
02	RH FLOOD LIGHT	GREEN WITH BLACK TEXT
03	LH FLOOD LIGHT	GREEN WITH BLACK TEXT
05	COMPT LIGHT	GREEN WITH BLACK TEXT
15	BODY OPTION	GREEN WITH BLACK TEXT
18	MARKER/TAIL	GREEN WITH BLACK TEXT
20	RH TURN SIGNAL	GREEN WITH BLACK TEXT
21	LH TURN SIGNAL	GREEN WITH BLACK TEXT
23	BACK UP	GREEN WITH BLACK TEXT



Side Pack Harness to Rear Harness Connector - PN 75721



COLOR CODE: <BOTH ENDS>

- PIN A - RED
- PIN B - BRN
- PIN C - YEL
- PIN D - GRN

**PN 75721
Side Pack to Rear
Connector**

Wiring Harness T3 Side Pack Extension - PN 75722



CONNECTOR PINOUT <BOTH ENDS>

- PIN 1 - RED
- PIN 2 - BLK
- PIN 3 - WHT
- PIN 4 - GRN

**PN 75722
Wire Harness
T3 Side Pack
Extension**

Welder Installation

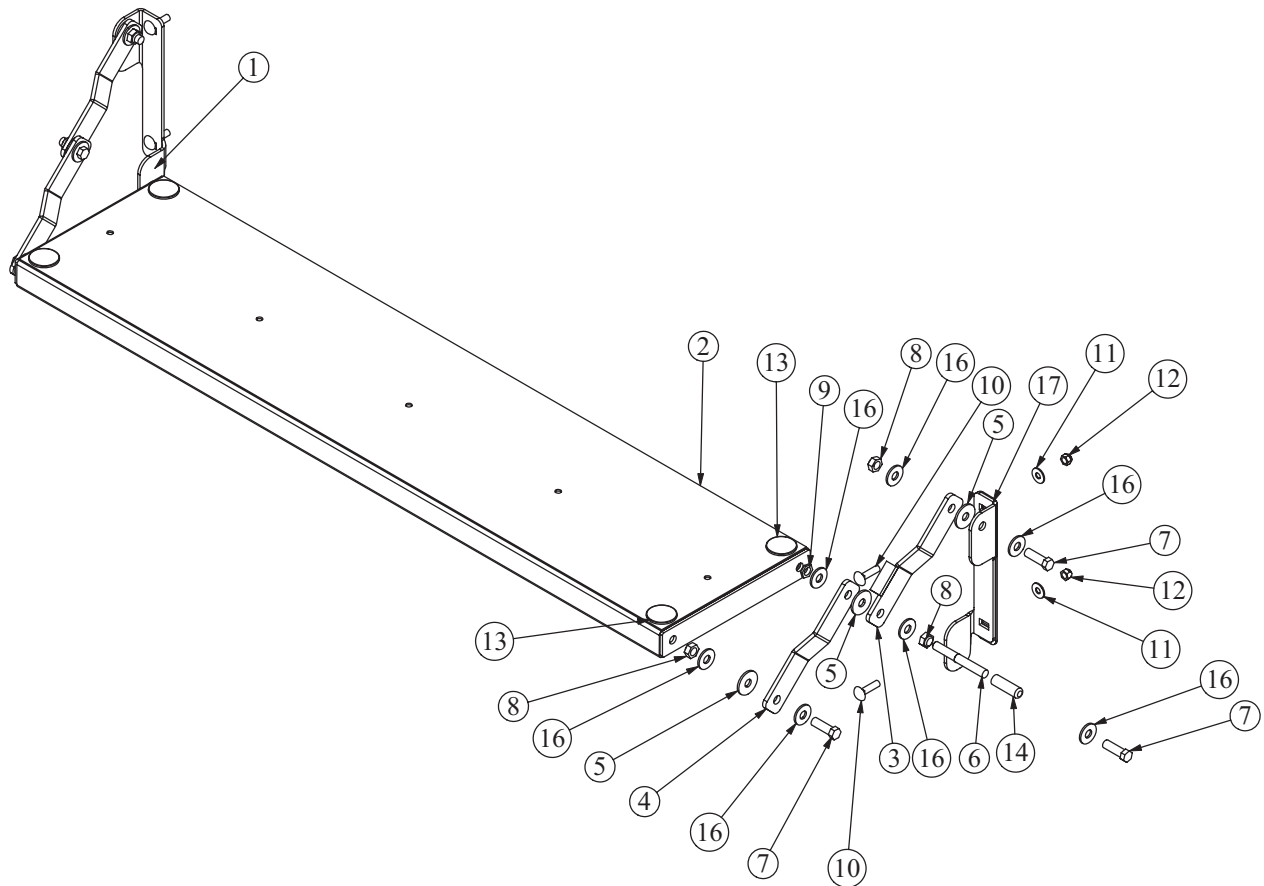
When installing welders on Stellar® Mechanic body packages it is highly recommended that you install an electrical surge protector to the chassis battery. If the electrical surge protector is not installed on to the battery, your customer could experience failures to the Chassis wiring circuit and also to the Stellar Mechanic body package wiring circuits. This electrical surge protector will help protect the Chassis ECM (Electronic Control Module), Transmission TCM (Transmission Control Module) and the Crane Radio Remote system against any electrical surges or spikes caused by poor grounding or from operators using the rear work bench bumper as a welding area.

Electrical Circuit Grounding

When installing product which requires 12 volt power to operate the equipment, always locate a good source for grounding the circuit. A majority of electrical failures are due to poor grounding. Poor grounding can cause intermittent operation of the equipment, electrical component failures and cause the equipment to not operate at all. Chassis manufacturers usually will have a ground strap which ties into the truck frame from the battery, but it is always a good idea to check each individual model to verify where the ground is located. If you are installing a body onto the chassis, never use the body as a ground source. If you add a crane or compressor to the body make sure the electrical grounds are routed to either the chassis frame or the chassis's main grounding source.

Chapter 4 - Assembly Drawings

Tailgate Assembly - PN 21401

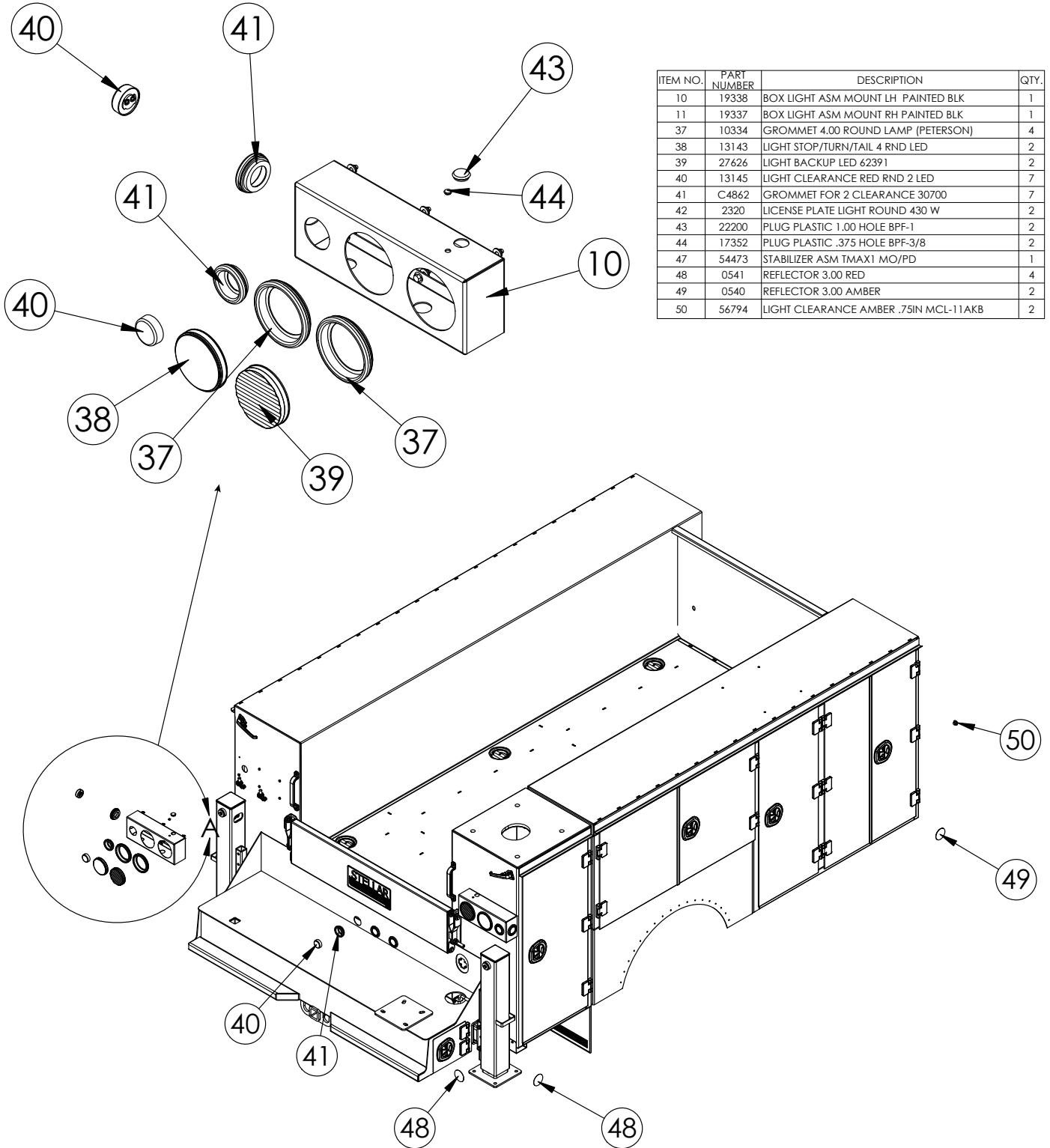


PN 21401

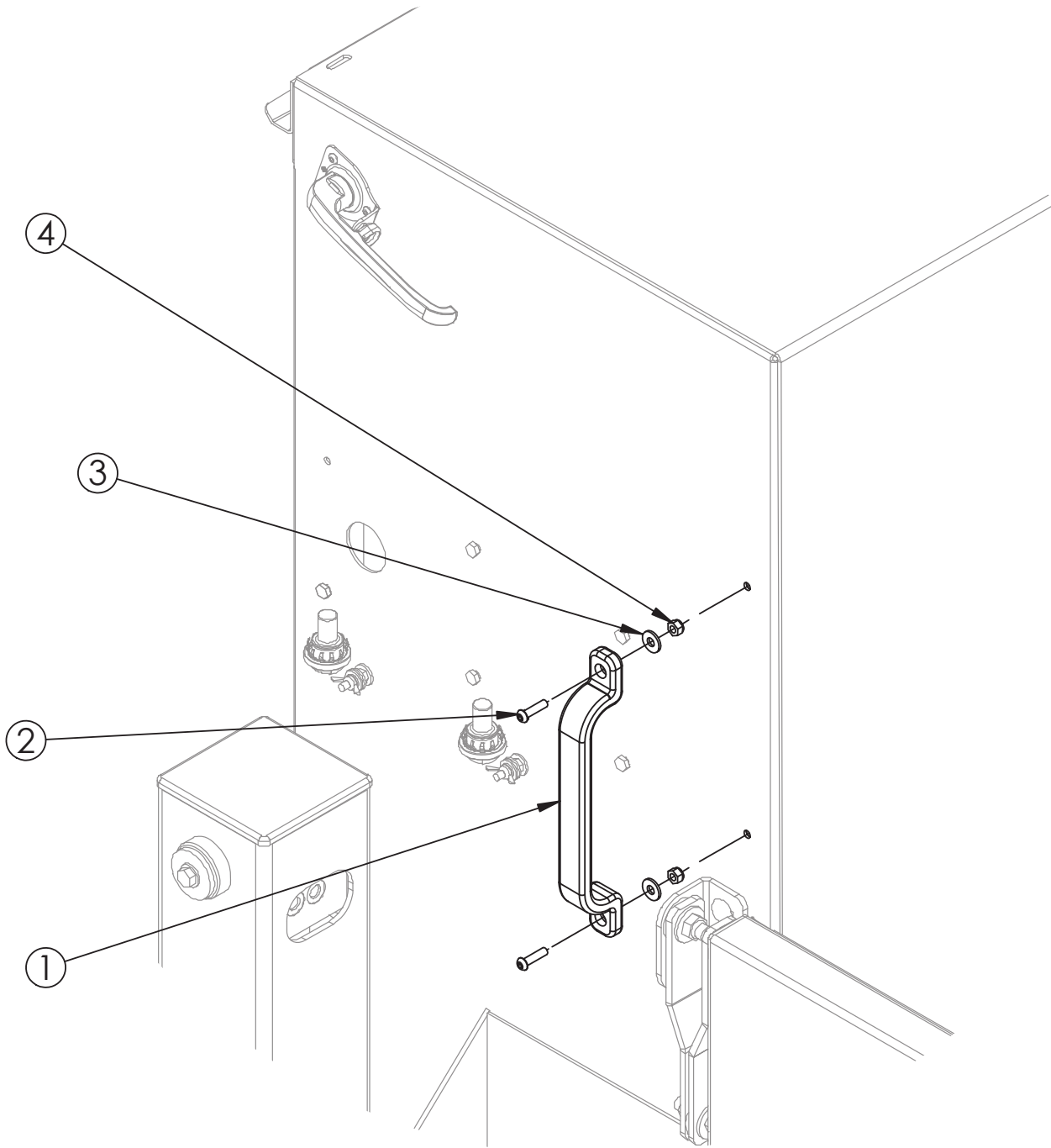
ITEM	PART	DESCRIPTION	QTY.
1	15848PC	BRKT TAILGATE LH 15848 POWDERCOAT	1
2	21322PC	TAILGATE WLDMT MCH 21322 POWDERCOAT	1
3	15849PC	BRKT TAILGATE STOP 15849 POWDERCOAT	1
4	15846PC	BRKT TAILGATE 15846 POWDERCOAT	3
5	C4516	WASHER 0.56IDX1.50ODX0.13 THK NYLON	8
6	22169	STUD .50-13X4.00X1.75THRD	1
7	22170	CAP SCR 0.50-13X1.50 HHGR5 SS	7
8	22164	NUT 0.50-13 HHGR5 NYLOC SS	8
9	22165	NUT 0.50-13 HH JAM NYLOC SS	1
10	D1482	BOLT CARRIAGE 0.38-16X1.25 SS	4
11	66182	WASHER 0.38 BONDED	4
12	0347	NUT 0.38-16 HH NYLOC	4
13	15851	PLUG PLASTIC 1.50 HOLE 85985K29	4
14	C5587	CAP PLASTIC 0.375IDX0.50ODX2.00LONG	1
15	16094	DECAL STELLAR LOGO6.00X14.25REFLECT	1
16	22168	WASHER 0.50 USS FLAT SS	16
17	15847PC	BRKT TAILGATE RH 15847 POWDERCOAT	1

Light Box/Reflector Assembly

ITEM NO.	PART NUMBER	DESCRIPTION	QTY.
10	19338	BOX LIGHT ASM MOUNT LH PAINTED BLK	1
11	19337	BOX LIGHT ASM MOUNT RH PAINTED BLK	1
37	10334	GROMMET 4.00 ROUND LAMP (PETERSON)	4
38	13143	LIGHT STOP/TURN/TAIL 4 RND LED	2
39	27626	LIGHT BACKUP LED 62391	2
40	13145	LIGHT CLEARANCE RED RND 2 LED	7
41	C4862	GROMMET FOR 2 CLEARANCE 30700	7
42	2320	LICENSE PLATE LIGHT ROUND 430 W	2
43	22200	PLUG PLASTIC 1.00 HOLE BPF-1	2
44	17352	PLUG PLASTIC .375 HOLE BPF-3/8	2
47	54473	STABILIZER ASM TMAX1 MO/PD	1
48	0541	REFLECTOR 3.00 RED	4
49	0540	REFLECTOR 3.00 AMBER	2
50	56794	LIGHT CLEARANCE AMBER .75IN MCL-11AKB	2



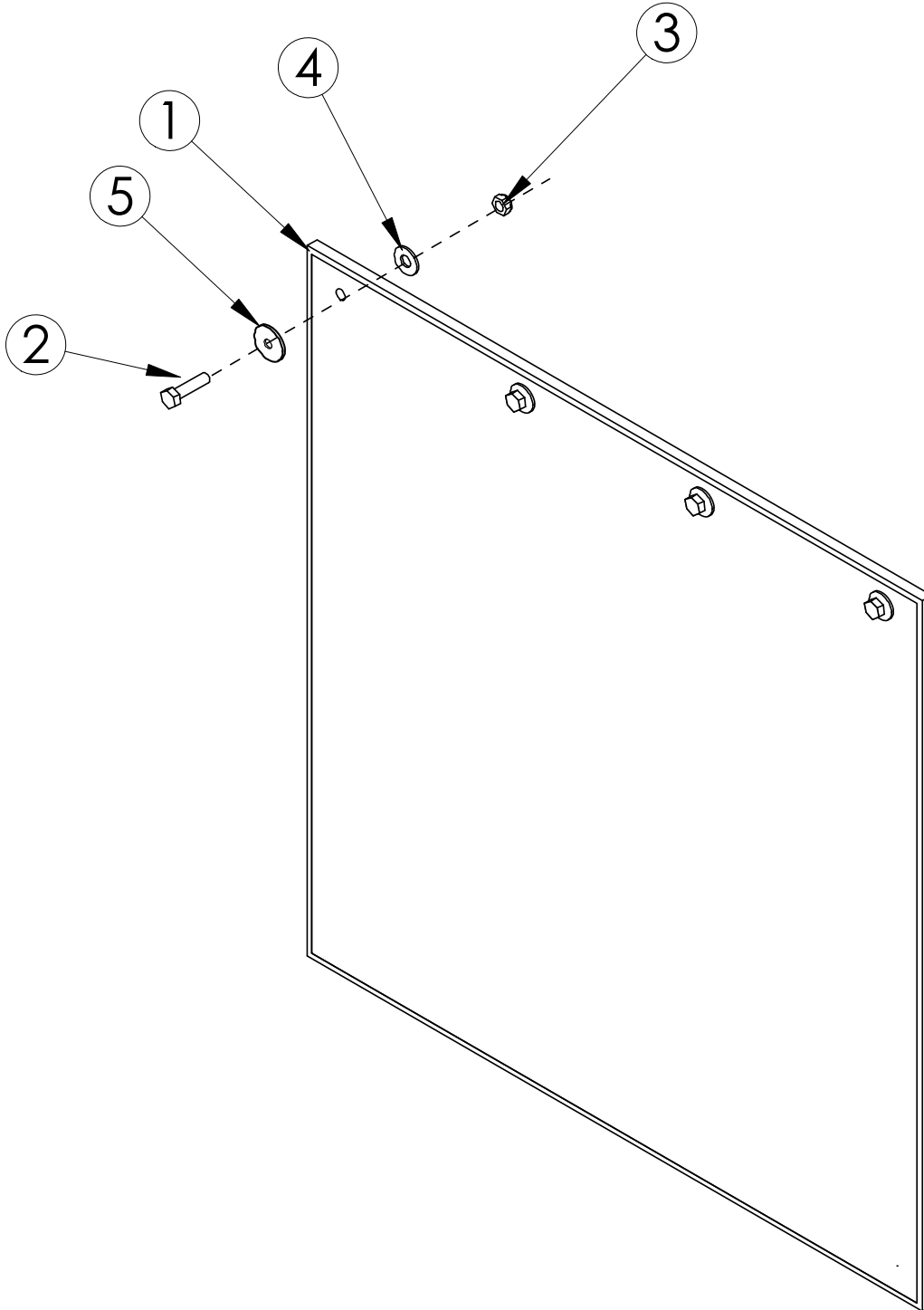
Grab Handle Assembly - PN 54547



PN 54547

ITEM	PART	DESCRIPTION	QTY.
1	13489	GRAB HANDLE 11 BLACK AH4303	2
2	C6022	CAP SCR 0.25-20X1.00 BTNHD SS	4
3	41047	WASHER 0.25 BONDED SEALING NEO BACK	4
4	0333	NUT 0.25-20 HHGR5 NYLOC	4

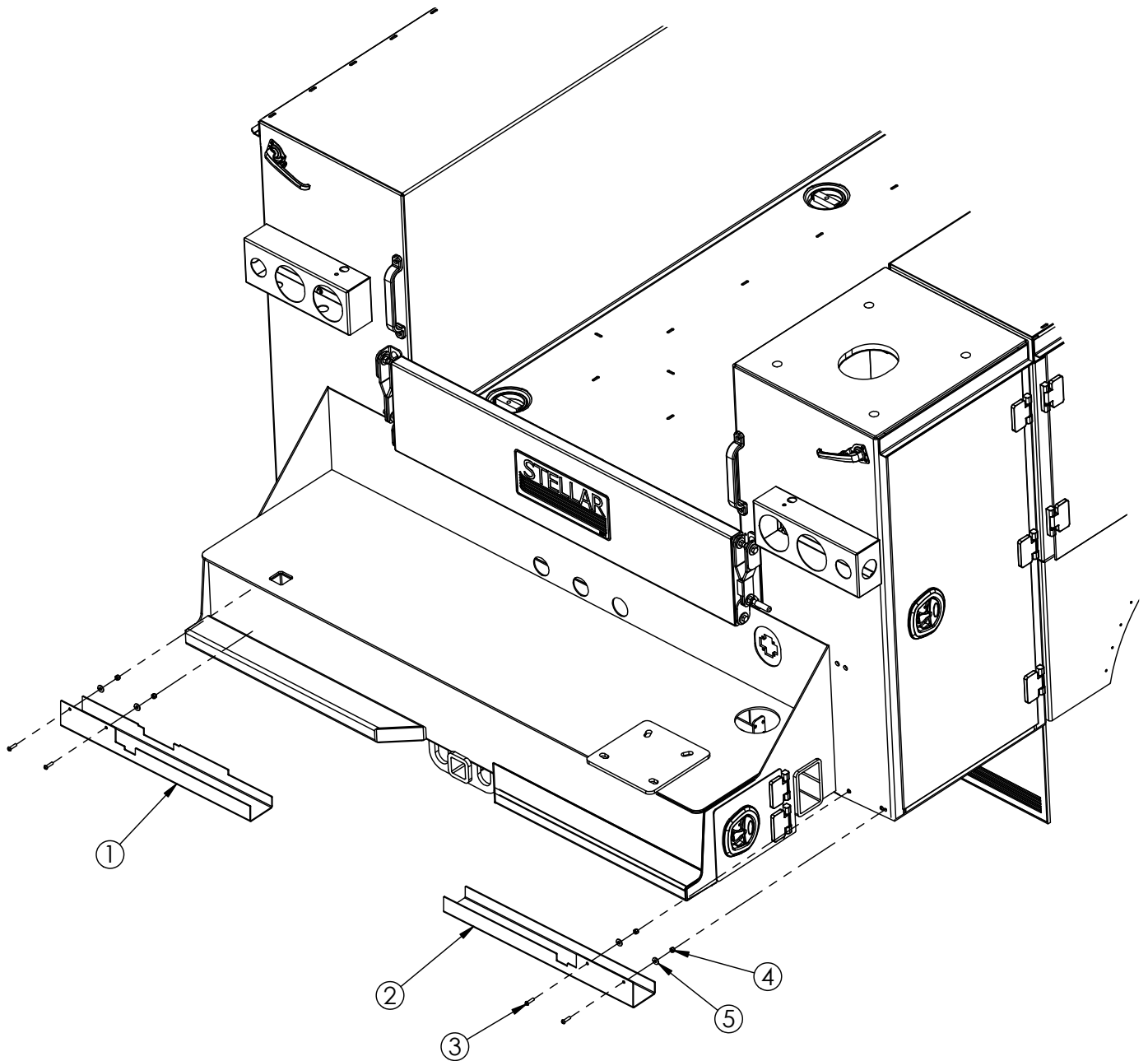
Mud Flap Assembly - PN 19494



PN 19494

ITEM	PART	DESCRIPTION	QTY.
1	C4821	MUD FLAP 24.00X24.00 STELLAR	2
2	0485	CAP SCR 0.31-18X1.25 HHGR5	8
3	0342	NUT 0.31-18 HH NYLOC	8
4	D0607	WASHER 0.31 BONDED	8
5	C2225	WASHER 0.31 FENDER 1.25OD	8

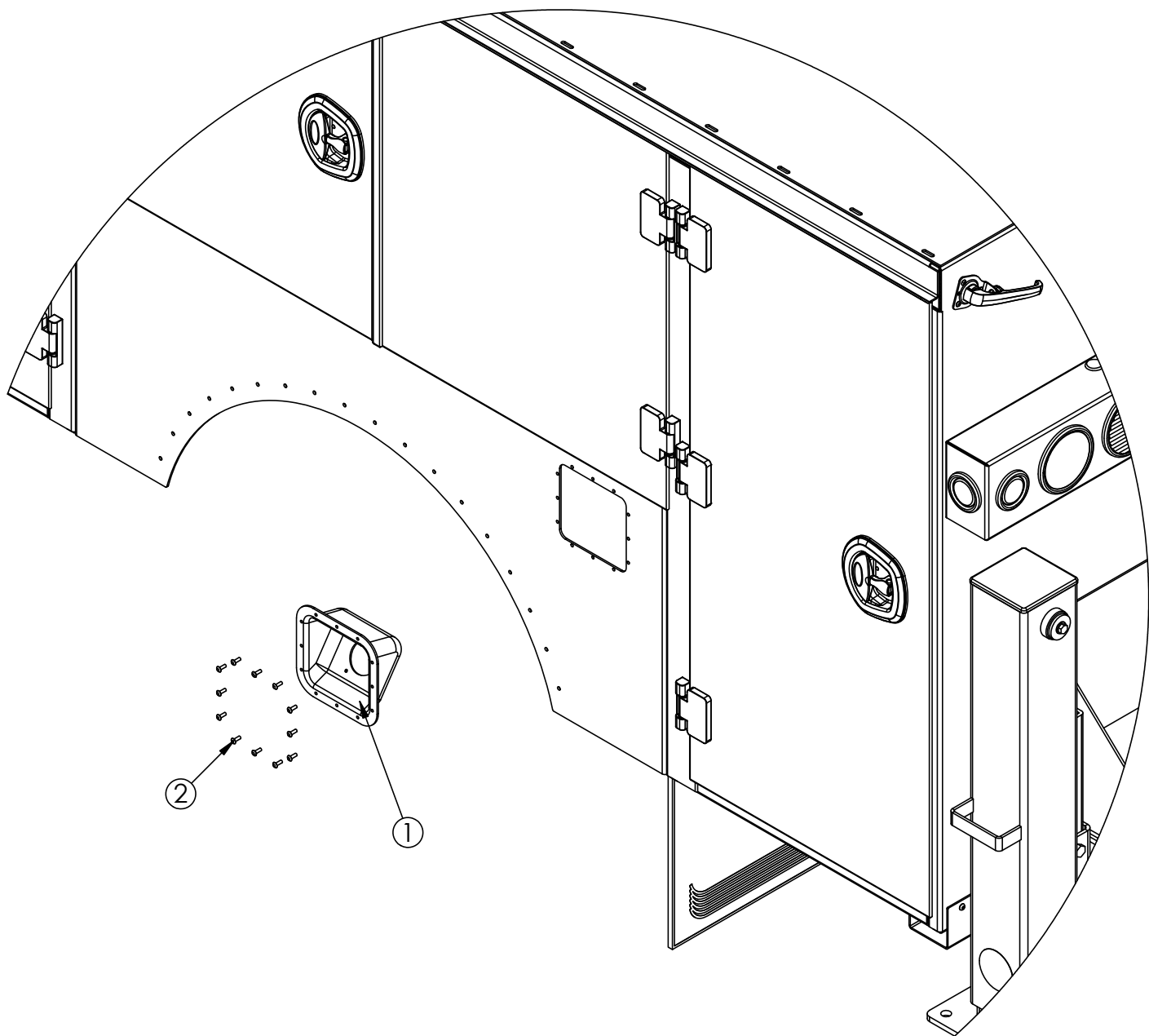
Harness Guard Kit Assembly - PN 54549



PN 54549

ITEM	PART	DESCRIPTION	QTY.
1	16727	CHANNEL HARNESS GUARD LH	1
2	16728	CHANNEL HARNESS GUARD RH	1
3	C6022	CAP SCR 0.25-20X1.00 BTNHD SS	4
4	30659	NUT 0.25-20 HH NYLOC SS	4
5	41047	WASHER 0.25 BONDED SEALING NEO BACK	4

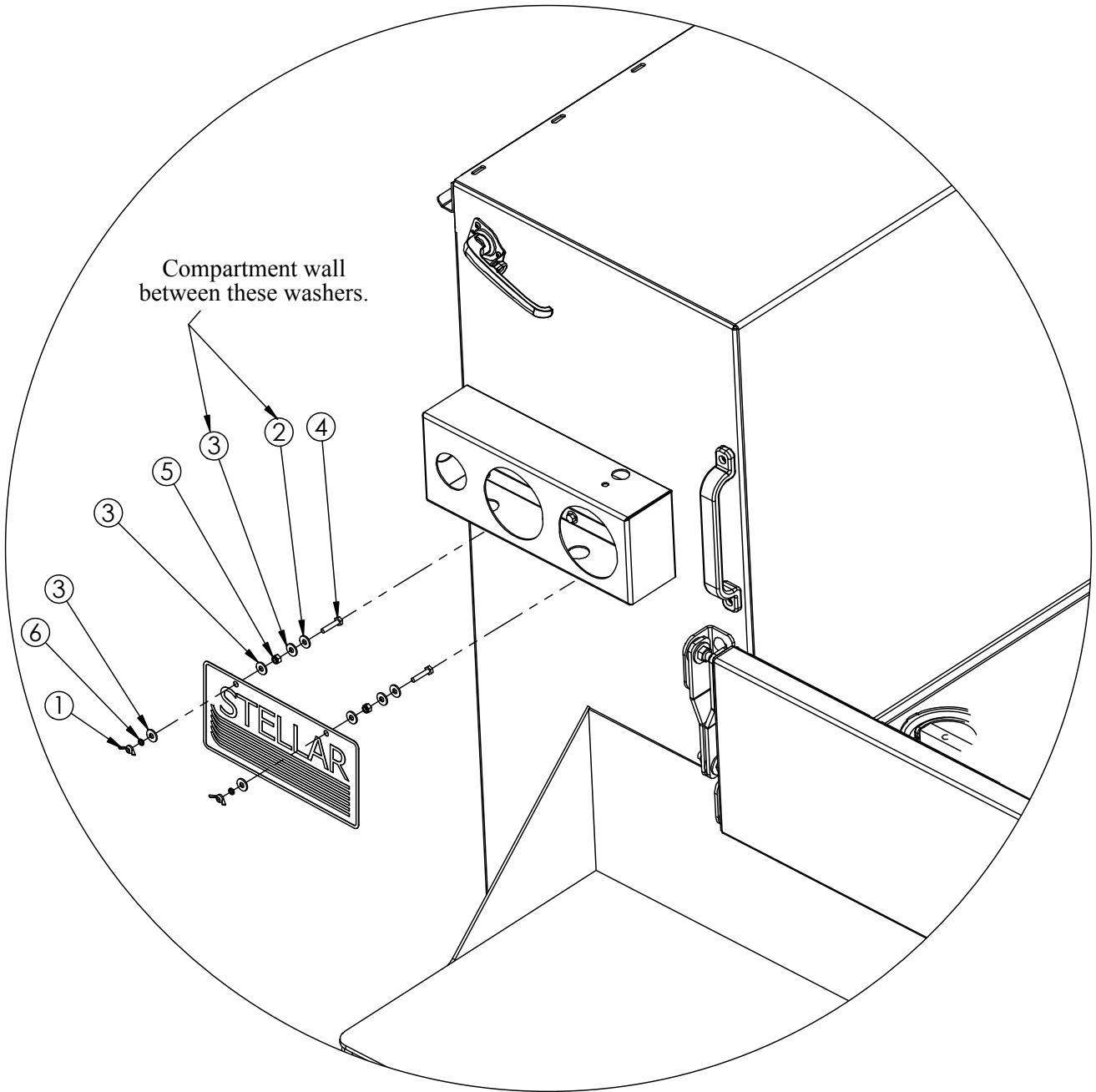
Ford Fuel Fill Assembly (TMAX1) - PN 54715



PN 54715

ITEM NO.	PART NUMBER	DESCRIPTION	QTY.
1	C4884	FUEL FILL FORD PLASTIC	1
2	11754	RIVET SS 0.19X0.063-0.437 MGLP-U6-E	12

License Plate Hardware Assembly - PN 54548



PN 54548

ITEM	PART	DESCRIPTION	QTY.
1	0654	NUT 0.25-20 WING	2
2	41047	WASHER 0.25 BONDED SEALING NEO BACK	2
3	0340	WASHER 0.25 USS FLAT ZINC	6
4	0437	CAP SCR 0.25-20X1.25 HHGR5	2
5	0333	NUT 0.25-20 HHGR5 NYLOC	2
6	0521	WASHER 0.25 LOCK	2



Subject to Change without Notification.
© 2016 Stellar Industries, Inc.